

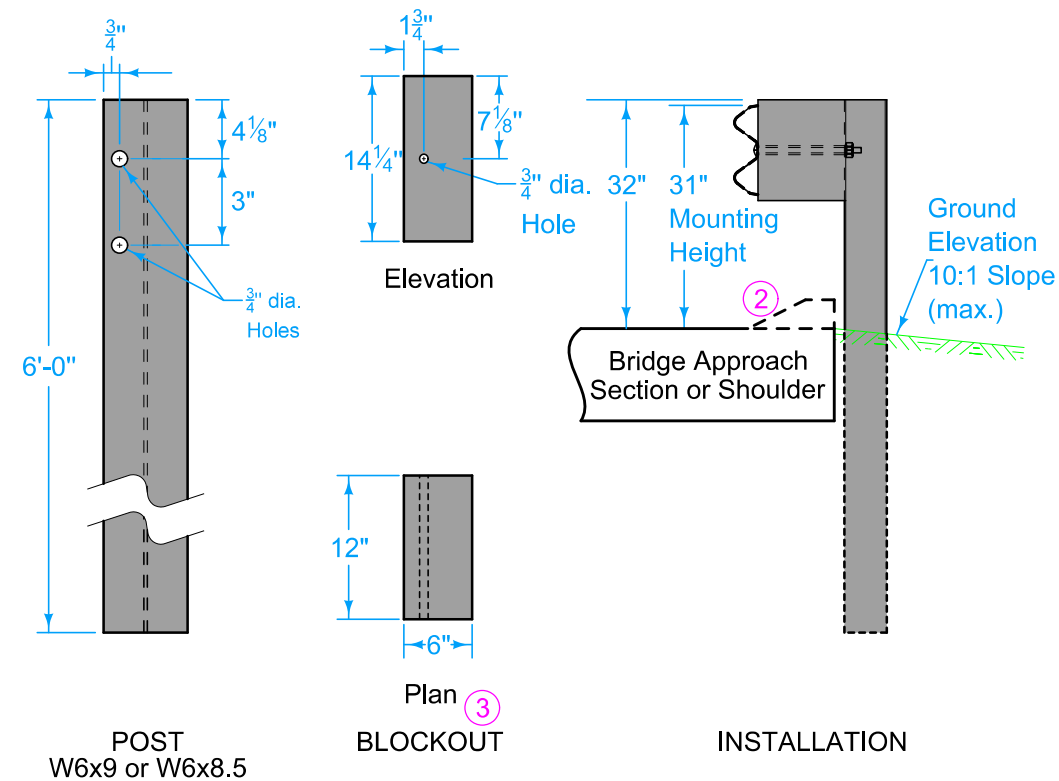
At Bridge End Drains, cut Scour Protection (Transition Mat and Turf Reinforcement Mat) or remove rock as required to place post(s) such that Bridge End Drains abut post(s).

- ① Guardrail mounting height at barrier connection and posts 5-15 is 34 inches. Guardrail mounting height at posts 1-3 is 31 inches.
- ② Possible 4 inch sloped curb. See project plans. Refer to PV-102 for curb and runout details.

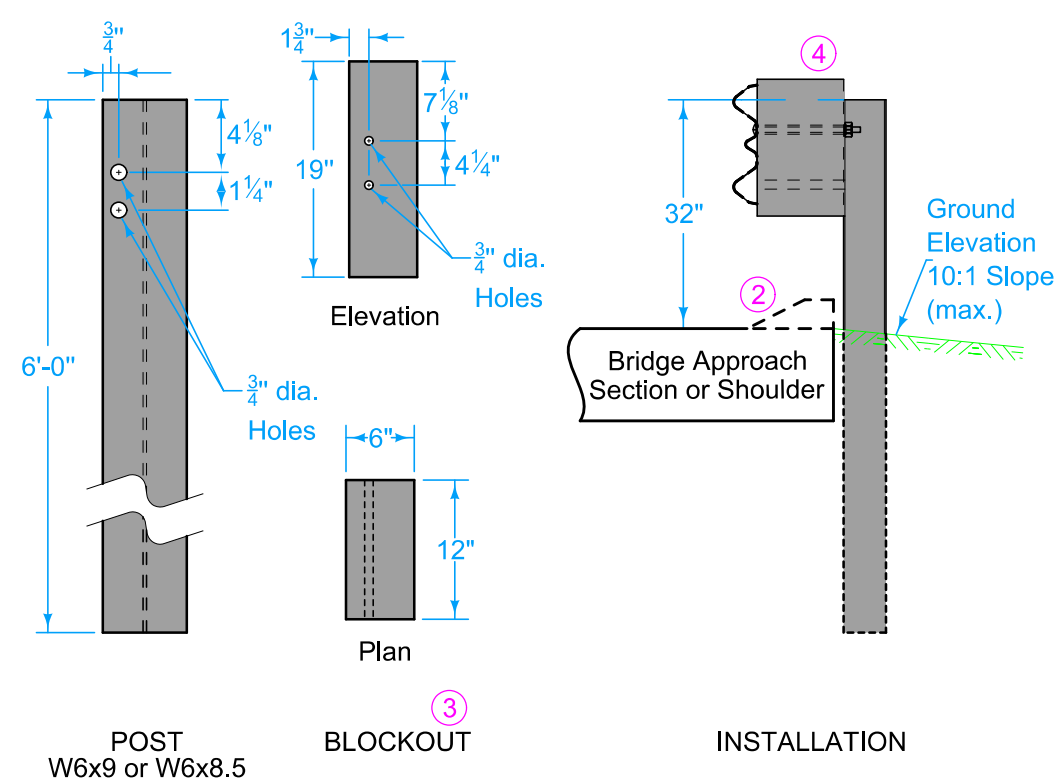
- ① Possible Contract Item: Steel Beam Guardrail Barrier Transition Section, BA-209
- Materials included in the Contract Item:
- Steel Post Option:
- (9) W6x9 x 6'-0" posts
  - (6) W6x9 x 7'-0" posts
  - (12) 6" x 12" x 19" blockouts
  - (3) 6" x 12" x 14" blockouts
- Wood Post Option:
- (9) 6" x 8" x 6'-0" posts
  - (6) 6" x 8" x 7'-0" posts
  - (12) 6" x 12" x 19" blockouts
  - (3) 6" x 12" x 14" blockouts
- (1) Symmetrical Transition Section
  - (2) 12'-6" Thrie-Beam rail sections\*
  - (1) 6'-3" Thrie-Beam rail section\*
  - (2) 12'-6" W-Beam rail sections
- Approved bolts, nuts, and washers  
Refer to BA-200 for guardrail components

\* One 18'-9" Thrie-Beam rail section may be substituted for one of the 12'-6" sections and the 6'-3" section as shown

<b>IOWA DOT</b> <b>STANDARD ROAD PLAN</b>	REVISION	
	NEW	10-15-24
	<b>BA-209</b>	
SHEET 1 of 3		
REVISIONS: NEW		
<i>Shant Miller</i> APPROVED BY DESIGN METHODS ENGINEER		
<b>STEEL BEAM GUARDRAIL BARRIER TRANSITION SECTION (MASH TL-3, 34" mounting height)</b>		

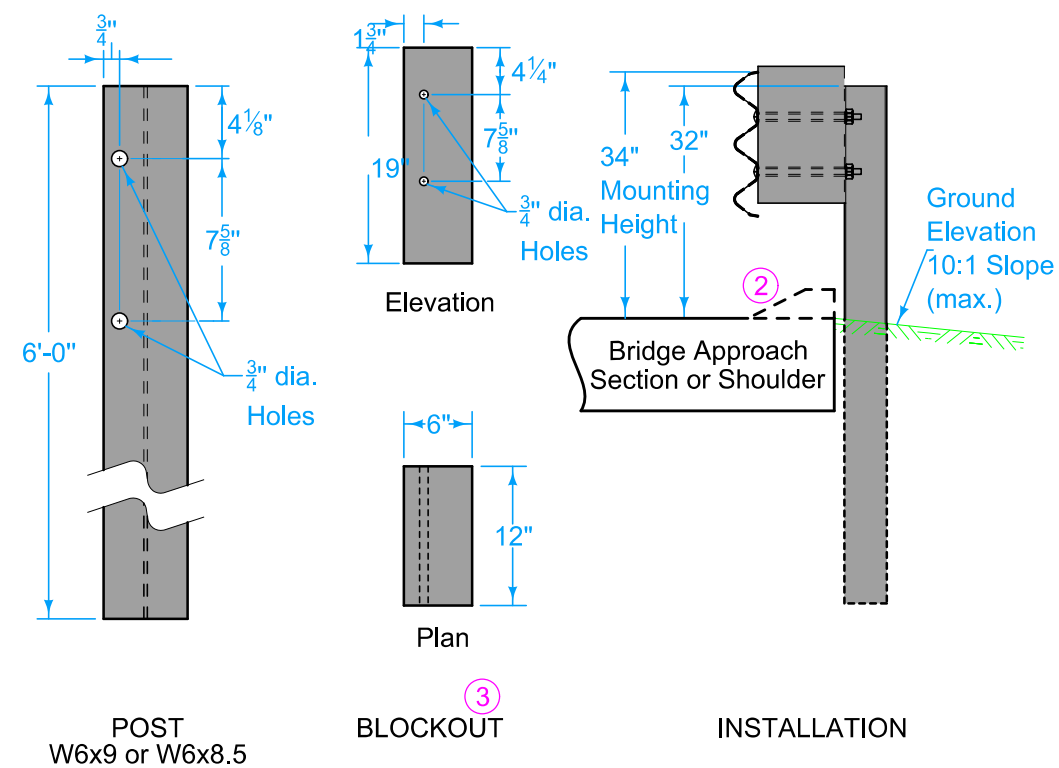


STEEL BTS POST #1-3

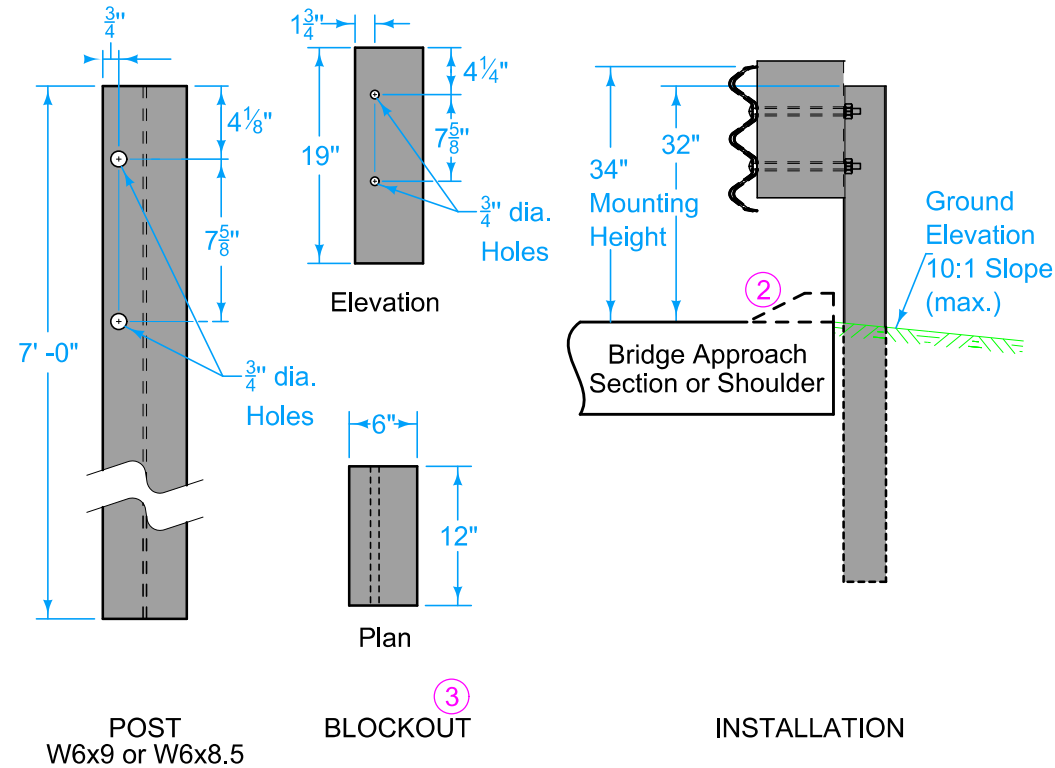


STEEL BTS POST #4



- ② Possible 4 inch sloped curb. See project plans. Refer to PV-102 for curb and runout details.
- ③ Wood or composite only. Steel blockouts will not be allowed.
- ④ Place bolt in top hole only.

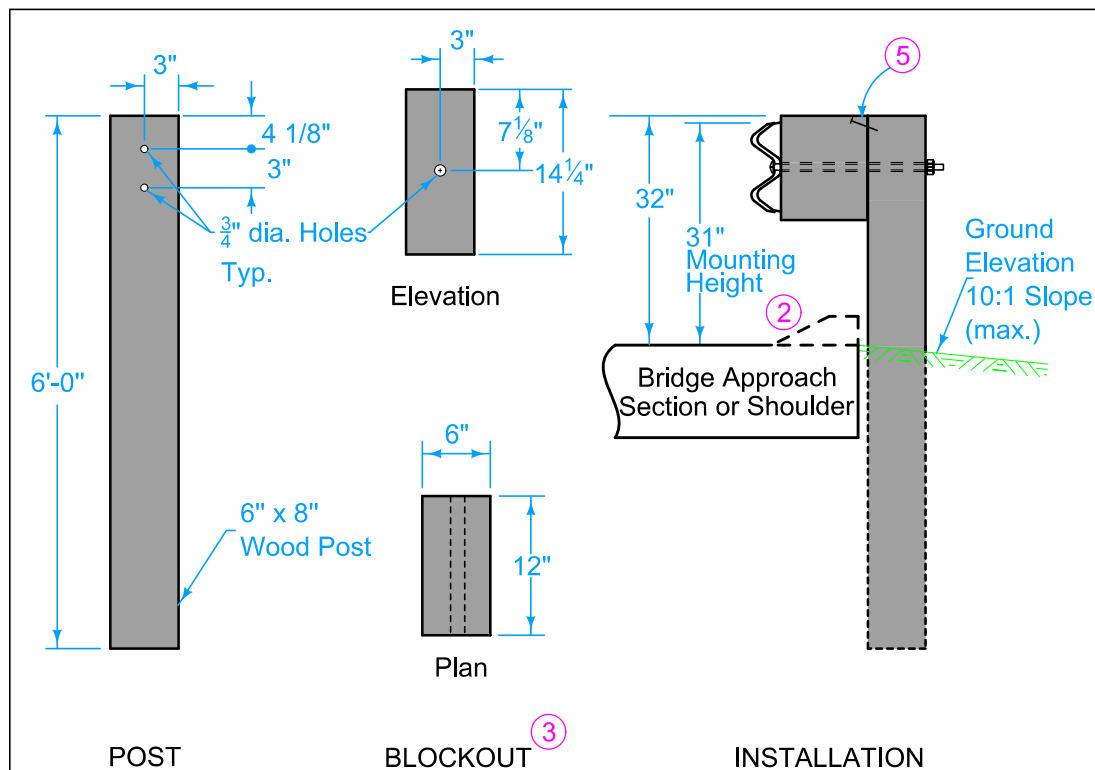


STEEL BTS POSTS# 5-9

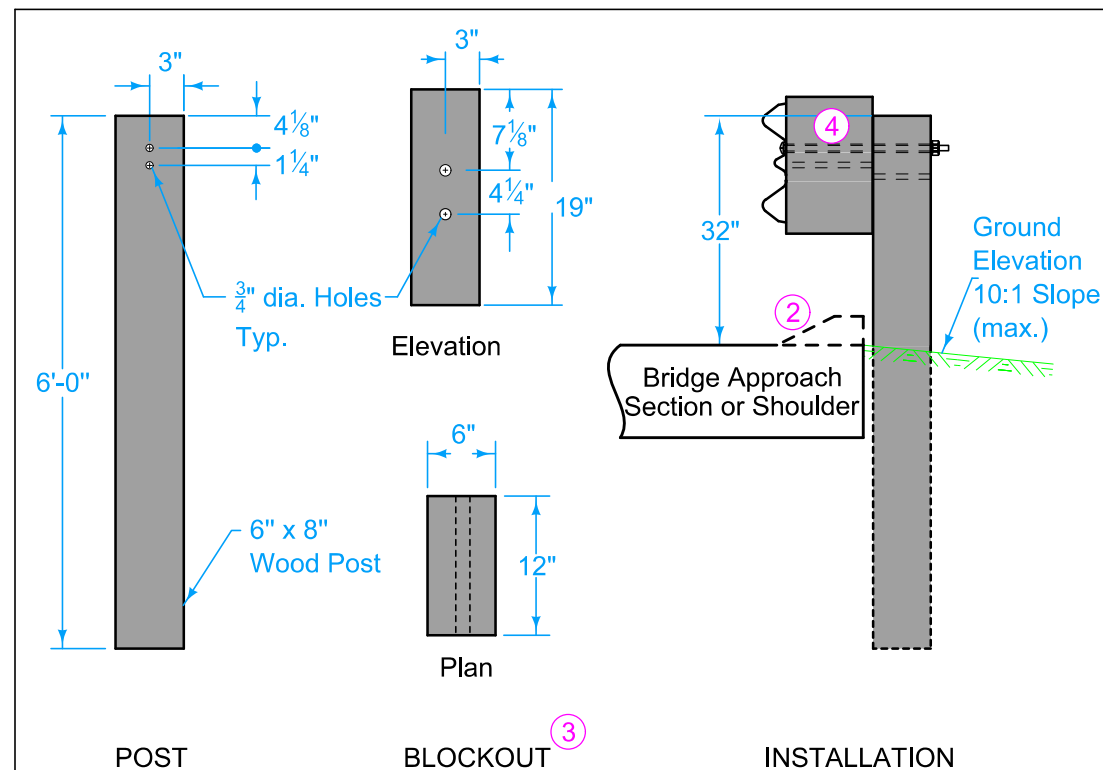


STEEL BTS POSTS #10-15

<div> IOWA   DOT</div> <div>STANDARD ROAD PLAN</div>	REVISION	
	NEW	10-15-24
	BA-209	
	SHEET 2 of 3	
REVISIONS:      NEW		
<div></div>		
APPROVED BY DESIGN METHODS ENGINEER		
<div>STEEL BEAM GUARDRAIL</div> <div>BARRIER TRANSITION SECTION</div> <div>(MASH TL-3, 34" mounting height)</div>		

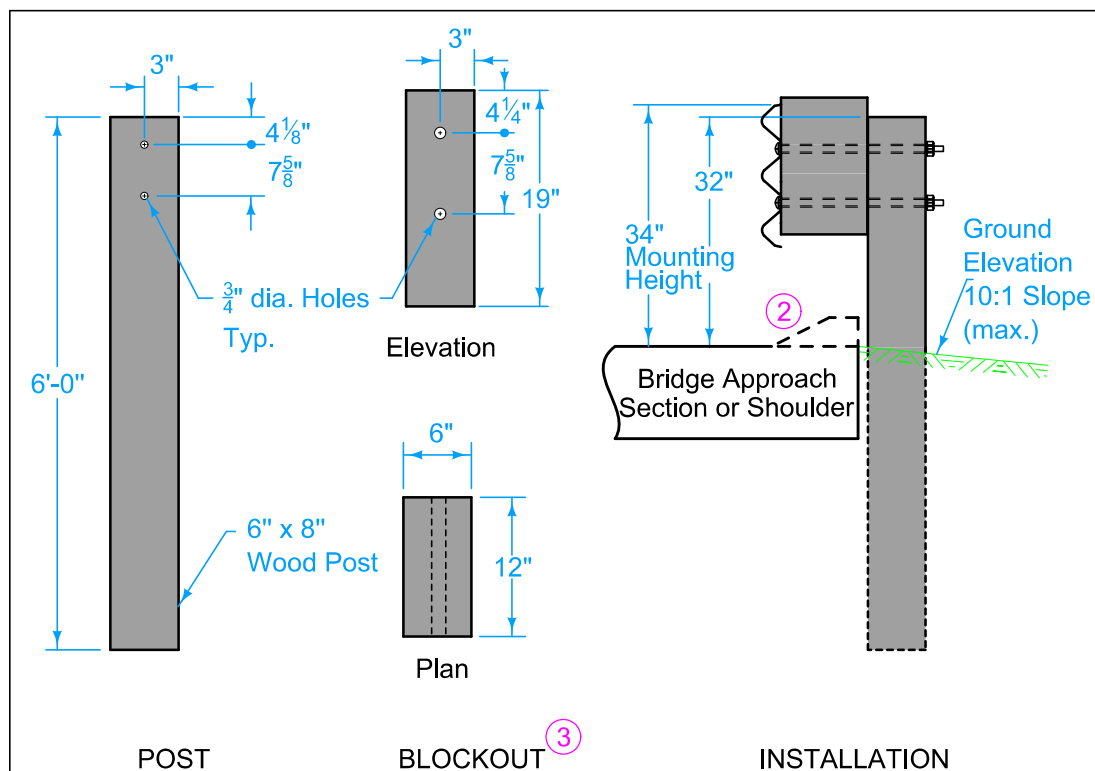


WOOD BTS POSTS #1-3

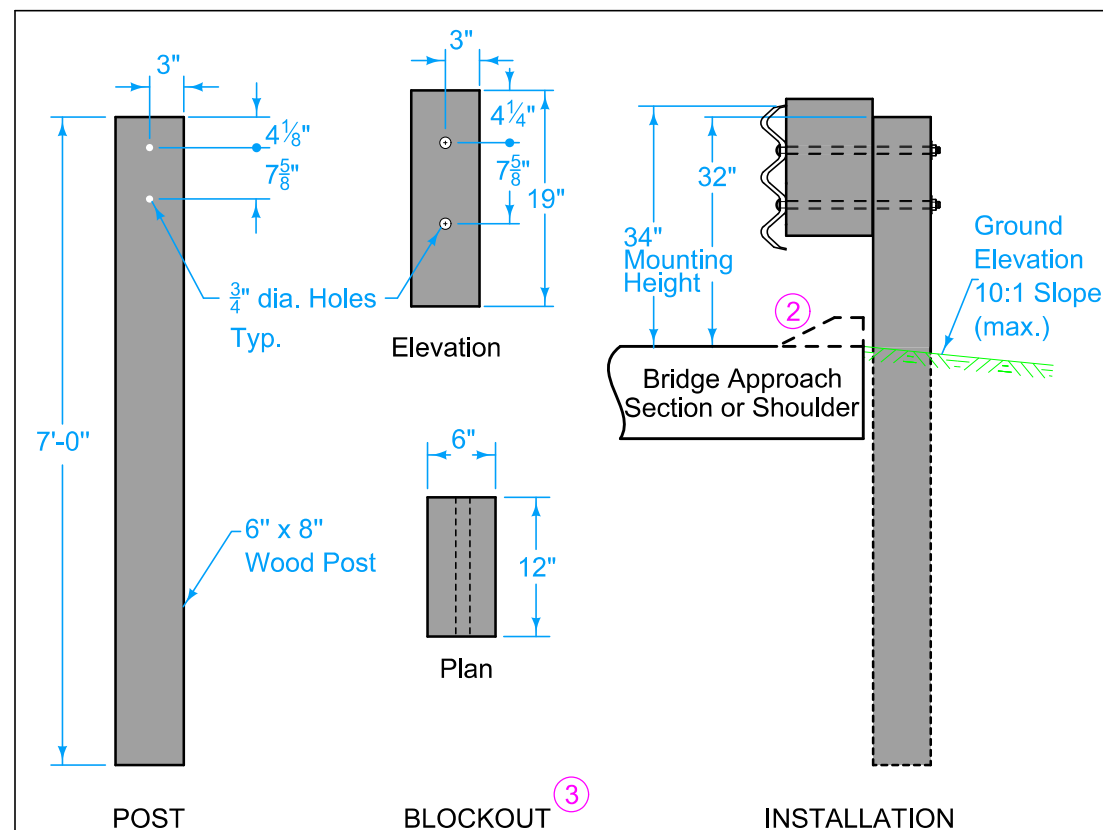


WOOD BTS POST #4



- ② Possible 4 inch sloped curb. See project plans. Refer to PV-102 for curb and runout details.
- ③ Wood or composite only. Steel blockouts will not be allowed.
- ④ Place bolt in top hole only.
- ⑤ 16d nail to prevent blockout rotation.



WOOD BTS POSTS #5-9



WOOD BTS POSTS #10-15

 <b>IOWA   DOT</b>	REVISION	
	NEW	10-15-24
	<b>BA-209</b>	
	SHEET 3 of 3	
REVISIONS:      NEW		
		
APPROVED BY DESIGN METHODS ENGINEER		
<b>STEEL BEAM GUARDRAIL BARRIER TRANSITION SECTION (MASH TL-3, 34" mounting height)</b>		